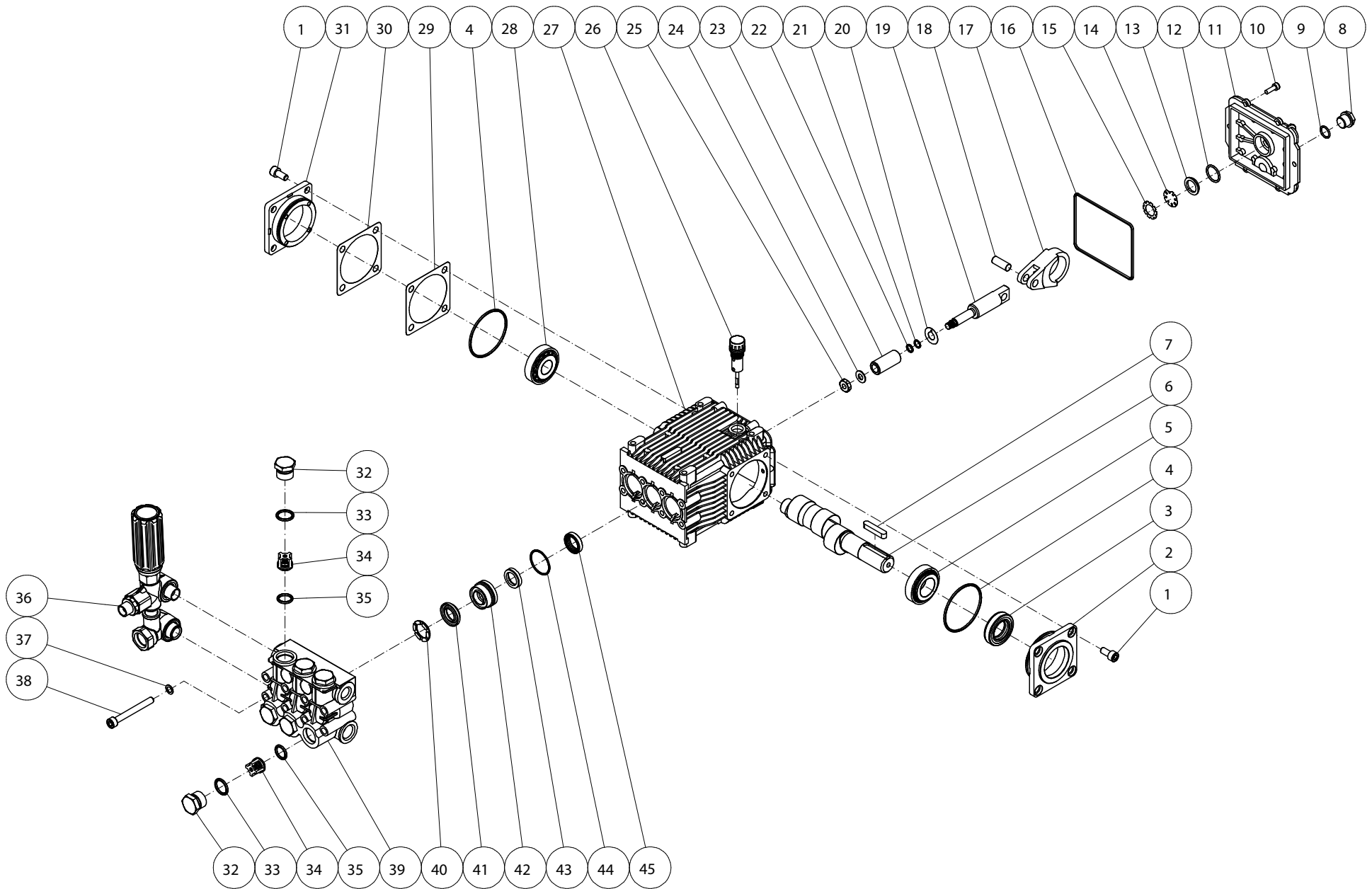


# GROUP EV



ITEM	PART	QTY.	DESCRIPTION
1	0J8607	8	SHCS-GR12.9 M8-1.25PX16MM BLK
2	0J8620	1	PUMP - SHAFT COVER
3	0J8597	1	SEAL - OIL
4	0J8584	2	O-RING
5	-	1	ROLLER BEARING
6	0J8637	1	PUMP-CRANKSHAFT
7	0J8617	1	KEY - PUMP
8	0J8614	1	PLUG - BRASS
9	0J8581	1	O-RING
10	0J8608	6	HSHCS-TCEI GR8.8 M5-0.8PX16MM
11	0J8632	1	PUMP - COVER CRANKCASE
12	0J8582	1	O-RING
13	0J8618	1	OIL SIGHT GLASS
14	0J8633	1	PUMP - REFLECTOR - OIL
15	0J8619	1	SPRING RETAINR-OIL SIGHT GLASS
16	0J8588	1	O-RING
17	0J8634	3	PUMP-CONNECTING ROD-ALUMINUM
18	0J8621	3	PUMP - PISTON PIN
19	0J8622	3	PUMP - PLUNGER ROD
20	0J8623	3	PUMP-SLINGER WASHER
21	0J8589	3	BACKUP RING
22	-	3	O-RING
23	0J8624	3	PUMP - PISTON CERAMIC
24	0J8598	3	SEAL-WASHER/GASKET
25	0J8611	3	NUT - M8-1.25P X 15MM
26	0J8615	1	OIL DIPSTICK
27	0J8639	1	PUMP CRANKCASE
28	0J8640	1	NON DRIVEN TAP ROLLER BEARING
29	0J8627	(1-3)	PUMP - SHIM
30	0J8626	(1-3)	PUMP - SHIM
31	0J8625	1	PUMP-BEARING CAP/SUPPORT
32	0J8616	6	CAP - VALVE - BRASS
33	0J8580	6	O-RING
34	0J8636	6	COMPLETE VALVE
35	-	6	O-RING
36	0J8569	1	UNLOADER-COMPLETE
37	0J8609	8	LOCKWASHER-ZI M8 SERR. CURVE
38	0J8606	8	HSH-ZI GR8.8 M8-1.25P X 70MM
39	0J8638	1	PUMP - MANIFOLD - BRASS
40	0J8631	3	PUMP - SUPPORT RING
41	0J8630	3	PUMP - V-PACKING
42	0J8629	3	PUMP - PACKING RETAINER
43	0J8628	3	PUMP - LOW PSI SEAL
44	0J8585	3	O-RING
45	0J8635	3	OIL SEAL
-	0J8643	1	KIT - HIGH PRESSURE SEAL
-	0J8649	1	KIT - SUPPORT RING
-	0J8650	1	KIT-VALVES (1750 RPM PUMPS)
-	0J8651	1	KIT-OIL SEALS
-	0J8652	1	KIT-PISTON